



# COMBINAL

LASH & BROW EXPERT

## TINTING



**DR TEMT LABORATORIES**

A-1160 Vienna, Austria | [combinational.com](http://combinational.com) | Made in Austria

# COMBINAL | TINTING

LASH & BROW EXPERT

## 1<sup>st</sup> Step

Remove eye make-up before tinting the eyelashes and brows with the non-oily COMBINAL Eye and Brow Make-Up Remover. Follow with COMBINAL Eyelash and Brow Cleanser to eliminate any oily substance from the eye area.



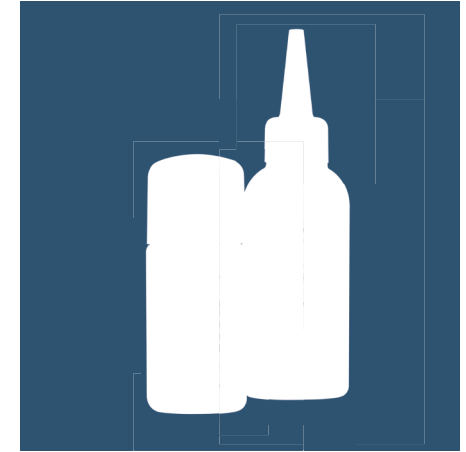
## 2<sup>nd</sup> Step

We recommend to use our COMBINAL Silicone Tinting Pads for a clean eyelash tinting, that also protects the skin from color and chemicals.



## 3<sup>rd</sup> Step

Place 2 cm (1 inch) COMBINAL tint with 5 drops of COMBINAL Hydrogen Peroxide 5% or COMBINAL Premium Developer 3% into the mixing dish and mix it to a creamy paste immediately before tinting.



## 4<sup>th</sup> Step

The customer must keep his eyes closed throughout the entire process. Avoid contact with eyes. Carefully apply the paste on the lashes using the application stick, until they are completely covered. After this step, apply the same, or a brighter color on the eyebrows in the direction of hair growth.

**Application time for eyelashes:** Depending on the desired intensity 8 – 10 minutes.

**Application time for eyebrows:** Eyebrows need a shorter application time – approx. 2-3 minutes. The appropriate length of application time also depends on the hair structure of brows and lashes.



DR TEMT LABORATORIES

A-1160 Vienna, Austria | [combinational.com](http://combinational.com) | Made in Austria

# COMBINAL | TINTING

LASH & BROW EXPERT



## 5<sup>th</sup> Step

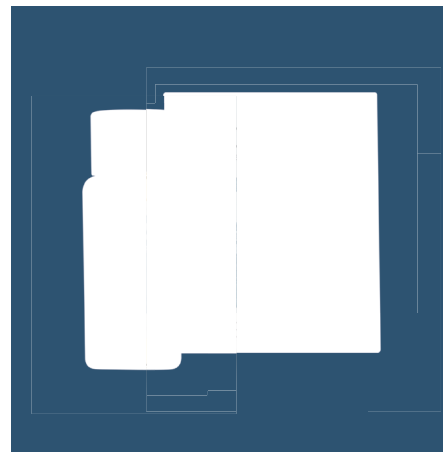
**Cleansing the lashes:** After the required application time remove the tint paste gently from the lashes, using a cotton swab or the application stick, by moving it towards the COMBINAL Silicone Tinting Pads. Remove the COMBINAL Silicone Tinting Pads carefully. Wipe off any remaining tint with KERALASH 5ml from the eyelids. Always work from the top down along the lashes. You can use KERALASH to remove any remaining residue or our oil-free COMBINAL Eyelash and Brow Cleanser.

**Cleansing the brows:** After the required application time remove the tint paste gently in the direction of hair growth, preferably also with our KERALASH 5ml. Any possible skin stains can be removed with the COMBINAL Colour Cleanser.



## 6<sup>th</sup> Step

Complete the tinting process with KERALASH 5 ml to laminate, repair lashes and brows and to intensify the colour.



DR TEMT LABORATORIES

A-1160 Vienna, Austria | [combinational.com](http://combinational.com) | Made in Austria